



ANNUAL MAP FUND AWARDS TOTAL \$1,000,000 TO SUPPORT GROUNDBREAKING LIVE PERFORMANCE, WITH ADDITIONAL FUNDS FOR GENERAL OPERATING SUPPORT

*Grants awarded to playwright Taylor Mac, roots-music ensemble The Carolina Chocolate Drops and choreographer Dayna Hanson, among others*

**New York, NY - July 8, 2010** [The MAP Fund](#), a program of Creative Capital supported by the Doris Duke Charitable Foundation and The Rockefeller Foundation, announced today its 2010 grants underwriting 40 new projects spanning the disciplines of performing arts practices. A panel of peers selected this year's grantees from more than 800 submissions.

The MAP Fund also announced the continuation of its involvement in an initiative by the Doris Duke Charitable Foundation that provides additional general operating support for MAP grantees in Theater, Dance, Interdisciplinary Works and Jazz, with the goal of providing greater stability to the infrastructure of the arts sector.

Ben Cameron, Program Director for the Arts at the Doris Duke Charitable Foundation said, "We are delighted and honored to support such an extraordinary group of artists and organizations through this year's MAP Fund. In addition to the project funding, we are especially pleased to once again offer additional unrestricted operating support to help organizations in these financially treacherous times-an important step to help insure their longer term financial health."

Among this year's artists, 55 percent are first-time grantees, including Amherst, MA-based playwright Marcus Gardley, who received support with New York's Foundry Theatre for The Oscar Grant Project, a play that deals with the 2009 fatal police shooting of Oscar Grant in Oakland, CA, and the subsequent media-fueled response. Another first-time grantee, Minneapolis-based Robert Karimi, received funding for The Cooking Show con Karimi y Comrades: Diabetes of Democracy, a multidisciplinary, interactive performance that uses cuisine and ritual to engage communities of color in discussions on the diabetes epidemic. In total, the grantees represent artist communities and audiences in 21 cities across the United States, from Austin to Pittsburgh to New Orleans to Butte, MT.

The MAP Fund 2010's artists will also have the opportunity to participate in Creative Capital's distinctive Professional Development Program (PDP). Through workshops led by Creative Capital grantees and other arts professionals, PDP teaches artists about strategic planning, fundraising, verbal communication, promotion and maximizing online capabilities to help them expand their skills and build more sustainable practices.

The MAP Fund's panelists this year were Rashida Bumbray (The Kitchen, New York); Jennifer Calienes (Maggie Allesee National Center for Choreography, Tallahassee); Sebastian Currier (Composer, New York); Lisa D'Amour (Playwright, Brooklyn);



Taylor Mac



Carolina Chocolate Drops

Vallejo Gantner (PS122, New York); Janie Geiser (Performance and Installation Artist, Los Angeles); Ronen Givoney (Le Poisson Rouge, New York); Megan Monaghan (Dramaturg, New York); Peter Taub (Museum of Contemporary Art, Chicago); Sixto Wagan (DiverseWorks, Houston); Chi-wang Yang (Theater Director and Media Artist, Los Angeles); and Pamela Z (Composer/Performer/Sound Artist, San Francisco).

"This year's MAP Fund grantees and their projects represent such an extraordinary diversity-I couldn't be more excited about these unique works and their potential to reach audiences in the coming years," said Ruby Lerner, President and Executive Director of Creative Capital. "It's particularly wonderful that all of the artists will have a chance to take our Professional Development workshops, which can make such a difference in their careers."

### **About the MAP Fund**

The MAP Fund receives primary support from the Doris Duke Charitable Foundation, with additional funds from the Rockefeller Foundation. For two decades the program has supported innovation and cross-cultural exploration in theater, dance and music. Among the longest-lived programs in arts philanthropy, MAP has disbursed over \$20 million dollars to more than 800 projects. Since 2001, the program has been administered by Creative Capital.

### **About Creative Capital**

Creative Capital is a national nonprofit organization dedicated to providing integrated financial and advisory support to artists pursuing adventurous projects in five disciplines: Emerging Fields, Film/Video, Innovative Literature, and Performing and Visual Arts. Working in long-term partnership with artists, Creative Capital's pioneering approach to support combines funding, counsel and career development services to enable a project's success and foster sustainable practices for its grantees. In its first decade, Creative Capital has committed more than \$20 million in financial and advisory support to 325 projects representing 406 artists and has reached an additional 3,000 artists in more than 50 communities around the country through its Professional Development Program.

FOR IMMEDIATE RELEASE  
Contact: Moira Brennan: 212.226.1677

### **MAP Fund 2010 Grantees**

#### **13 Playwrights, Inc.**

Brooklyn, NY  
*A Map of Virtue*  
Erin Courtney  
Ken Rus Schmoll

*A Map of Virtue*, a new play by Erin Courtney, directed by Ken Rus Schmoll, which explores questions of virtue and goodness through a fractured narrative.

#### **501 (see three) ARTS**

Los Angeles, CA  
*Who's Hungry - Santa Monica*  
Dan Froot  
Dan Hurlin  
Amy Denio

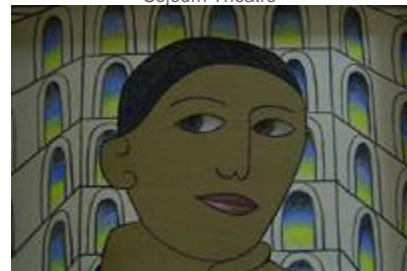
*Who's Hungry - Santa Monica* seeks to illuminate the human dimensions of local hunger by rendering life stories of homeless and



Dayna Hanson



Sojourn Theatre



501 (see three) ARTS

hungry residents of Santa Monica, CA, in the form of Puppet Theater.

### **About Face Theatre**

Chicago, IL  
*Let Them Eat Cake*  
Maureen Angelos  
Megan Carney  
Holly Hughes

*Let Them Eat Cake* provides an open theatrical forum that lets communities in different parts of the United States grapple with issues surrounding marriage equality.

### **Arizona State University Foundation**

Tempe, AZ  
*echo::system - ActionStation #3 - The Forest*  
Grisha Coleman  
Walter Kitundu  
John Oduro

*ActionStation #3 - The Forest*, the third in the five-part *echo::system* project, will translate the complex and unpredictable dynamics of a forest habitat into an imagined aesthetic installation, informed by the viewpoint of a contemporary urban dweller.

### **AXIS Dance Company**

Oakland, CA  
*ODD*  
AXIS Dance Company  
Shinichi Iova-Koga  
Joan Jeanrenaud

*ODD* will be an evening-length series of dances choreographed by Shinichi Iova-Koga in collaboration with AXIS Dance Company and composer/musician Joan Jeanrenaud. The collaboration is inspired by the paintings of Odd Nerdrum, an Iceland-based contemporary painter whose work merges images of archaic existence with modern artifacts.

### **Bang on a Can**

Brooklyn, NY  
*Mexican Radio*  
Betto Arcos  
Lila Downs  
David Lang

*Mexican Radio* is a live stage performance that takes the form of a "fake" radio show, complete with late-night DJ. Songs are by composer David Lang, sung by the Mexican/American diva Lila Downs and backed by the world-famous Bang on a Can All-Stars.

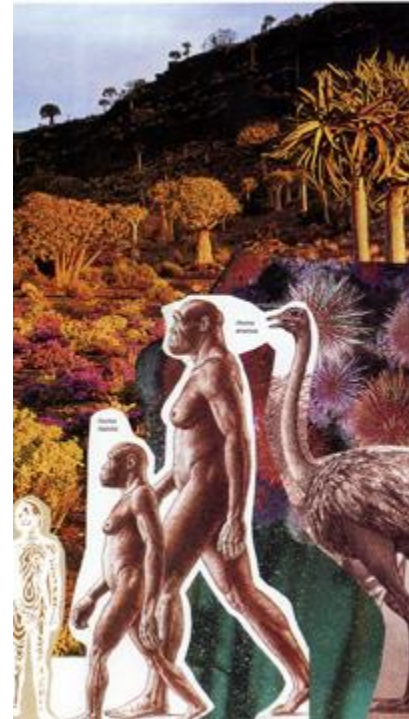
### **Beth Morrison Projects**

New York, NY  
*69° South*  
Jessica Grindstaff  
Erik Sanko  
The Kronos Quartet

*69° South* is a multimedia dance/theatre/marionette work that uses the story of explorer Ernest Shackleton's heroic journey across Antarctica to examine our past, present and proposed future.

### **Big Dance Theater, Inc.**

Brooklyn, NY  
*Supernatural Wife*  
Annie-B Parson



Arizona State University



Los Angeles Poverty Department



Jeff Larson  
Paul Lazar  
*Supernatural Wife* uses dance, theater, video and design to embody a surprising and nuanced response to Euripides' radical views on gender, selfishness and sacrifice, as expressed in his play *Alkestis*.

#### **Butte Silver Bow Arts Foundation**

Butte, MT  
*Thinking Like a Mountain*  
Ann Carlson  
Mary Ellen Strom  
*Thinking Like a Mountain* is a series of site-specific performance works that will explore the complexities, controversies, wildness and beauty of the forests in the Rocky Mountain West.

#### **Cross Performance, Inc.**

New York, NY  
*How Can You Stay in the House All Day and Not Go Anywhere?*  
Ralph  
Lemon  
*How Can You Stay in the House All Day and Not Go Anywhere?* is a multidisciplinary project merging dance, text, film, video, sound and visual art in an exploration of questions of loss, transcendence and the essential human destiny of partnership.

#### **Dance New Amsterdam (DNA)**

New York, NY  
*Guide to Kinship and Maybe Magic*  
Lewis Forever  
*Guide to Kinship and Maybe Magic* is a new cross-cultural, cross-disciplinary theatre work investigating the role of heritage, family, identity and performance in our society.

#### **Dance Theater Workshop, Inc.**

Brooklyn, NY  
*Danza Permanente*  
DD Dorvillier  
Zeena Parkins  
*Danza Permanente*, a quartet conceived by choreographer DD Dorvillier and developed in collaboration with composer Zeena Parkins, explores how the body can behave as sound.

#### **Everett Dance Theatre**

Providence, RI  
*Brain Storm (working title)*  
Everett Dance Theatre  
*Brain Storm (working title)*, a multimedia dance/theater production that examines the current state of brain research, and how it affects people with disabilities, brain injuries and emotional disorders, as well as those with "normal" brains.

#### **Flynn Center for the Performing Arts**

New York, NY  
*Tesla in New York*  
Jim Jarmusch  
Phil Kline  
Composer-writer Phil Kline and writer-director Jim Jarmusch will collaborate on an evening-length, mixed media music theater work based on incidents in the life of Serbian electrical engineer and inventor Nikola Tesla.

#### **Fractured Atlas Productions, Inc**



Horizon Theatre Company



13 Playwrights, Inc.

Brooklyn, NY

*Fame*

Saar Harari

Lee Sher

Brandon Terzic

*Fame* will explore through choreography the struggle of the individual combat soldier - how the army and the circumstances of war influence daily life and the very core of our society.

### **Fulcrum Point New Music Project**

Chicago IL

*Song Cycle commission*

Vivian Fung

Fulcrum Point New Music Project

Composer Vivian Fung will write a new song cycle for two vocalists and chamber ensemble, based on texts drawn from the stories and love poetry of the minority tribes of China and Southeast Asia.

### **Haleakala Inc. dba The Kitchen**

New York, NY

*Daughters of the Industrial Revolution*

Annie Gosfield & Ensemble

Flux Quartet

*Daughters of the Industrial Revolution* examines, through the compositions of Annie Gosfield, how this fertile, historical period changed how we see, hear and think about technology.

### **Headlong Dance Theater**

Philadelphia, PA

*Red Rovers*

Chris Doyle

Headlong Dance Theater

*Red Rovers* is a dance theater piece and art installation that uses the true story of the Mars Rovers, Spirit and Opportunity, as its dramaturgical starting point.

### **HERE Arts Center**

Brooklyn, NY

*Soul Leaves Her Body*

Peter Flaherty

Peter Ksander

Jennie MaryTai Liu

*Soul Leaves Her Body* is an integrated-media performance synthesizing theater, dance, cinema, live video, music, and foley sound, inspired by a 13th-century Chinese love story about a young woman who rips her soul from her body.

### **Horizon Theatre Company**

Atlanta, GA

*The Fugees Project (working title)*

Lisa Adler

Suehyla El-Attar

*The Fugees Project* weaves together the powerful stories of a Clarkston, GA soccer team made up of refugee children from war-torn countries with those of their coach and their families.

### **Intersection for the Arts**

San Francisco, CA

*First Element*

Felonious

Ricardo Richey

Sean San Jose



Mu Performing Arts



Beth Morrison Projects

*First Element* theatrically explores the rich and legendary history of street art in San Francisco's Mission District.

### **Junebug Productions**

New Orleans, LA

*I Want My Money Back!*

Royce Osborn

Hot 8 Brass Band

Junebug Productions

*I Want My Money Back!* is a collaborative, multidisciplinary, multimedia production infused with the New Orleans vernacular art of performative storytelling.

### **League of Electronic Musical Urban Robots**

Pittsburgh, PA

*Musical Work for Piano and Robots*

Marc Mellits

Kathleen Supove

Composer Marc Mellits will create a musical work for piano and robotic instruments, performed by pianist Kathleen Supove and LEMUR's robotic ensemble.

### **Los Angeles Poverty Department**

Santa Monica, CA

*Biggest Recovery Community Anywhere*

Henriette Brouwers

Kevin Michael Key

John Malpede

*Biggest Recovery Community Anywhere* is a live performance that explores the personal meaning and cultural significance of the recovery culture in Skid Row Los Angeles.

### **Mu Performing Arts**

Saint Paul, MN

Lauren Yee

A new play by Lauren Yee that considers how our larger American identity is impacted by the actions of individuals.

### **New Paradise Laboratories**

Philadelphia, PA

*Extremely Public Displays of Privacy*

Jorge Cousineau

Jeremy Beaudry

Whit MacLaughlin

*Extremely Public Displays of Privacy* is a cross-media performance interrogating the value of anonymity, the social demand for disclosure, the therapeutic value of transparency and the efficacy of public action.

### **Old Town School of Folk Music**

Chicago, IL

*Vaudeville: Black at the Roots*

Carolina Chocolate Drops

Reginald R. Robinson

Reggio "the Hooper" McLaughlin

*Vaudeville: Black at the Roots* is a 2-year collaboration that re-creates a significant and underappreciated performance genre in our national musical heritage.

### **On the Boards**

Seattle, WA

Gloria's Cause

Dayna Hanson

*Gloria's Cause*, a dance-driven rock musical, uses theater, music and testimonials to link ironies of the American Revolution to modern hopes and failures.

**Performance Zone, Inc. dba The Field**

New York, NY

*Animated Dance Film*

Pete Drungle

Sarah Michelson

A new work that's both an animated dance film and a documentary of the making of a dance in real time.

**Performance Zone, Inc. dba The Field**

New York, NY

*An Evening with Jomama Jones*

Bobby Halvorson

Daniel Alexander Jones

Kym Moore

*An Evening with Jomama Jones* - part concert, part revival and part theatre piece - centers on a mythical music diva who stages her triumphant return.

**Pick Up Performance Co(S.)**

New York, NY

*The History of Asking the Wrong Question (working title)*

Kelly Byars

Ramona Emerson

Ain Gordon

*The History of Asking The Wrong Question* investigates America's insistence that history be kept its way: names, dates, facts memorized in dead sequence, whereas New Mexican native cultures offer history as a continuum.

**Rude Mechanicals (aka Rude Mechs)**

Austin, TX

*Decameron Day 3: Revolution!*

Rude Mechanicals will create an original, site-specific performance on the theme of rebellion and revolution, that will use the labor of rehearsal, set construction, performance and strike to clean abandoned lots, plant sustainable flora and create public meeting spaces in the location of its performance.

**Sojourn Theatre**

Portland, OR

*The Penelope Project*

Sojourn Theatre Ensemble

Anne Basting

*The Penelope Project* is a 2-year theatre/community-engagement collaboration based on the Penelope myth in Homer's Odyssey, involving nursing home residents, their families and nursing home staff.

**Springboard for the Arts**

Minneapolis, MN

*Niicugni (Listen)*

Emily

Johnson

*Niicugni* is a dance performance that equates the land we live on with the cells that comprise our bodies.

**Springboard for the Arts**

Minneapolis, MN

*Symptom*

Olive Bieringa

Emmett Ramstad

Otto Ramstad

*Symptom* is a dance work featuring siblings Otto and Emmett Ramstad, which examines the human body as both an object of study and as a producer of knowledge.

### **Springboard for the Arts**

Minneapolis, MN

*The Cooking Show con Karimi y Comrades: Diabetes of Democracy*

Robert Karimi

*The Cooking Show con Karimi y Comrades* is a theater performance that uses culturally-specific cuisine, stories, and rituals to engage communities of color in discussions on the epidemic of Type 2 Diabetes.

### **Talking Band**

New York, NY

*Walk: A transcontinental play by Taylor Mac and the Talking Band*

Taylor

Mac

Talking Band

*Walk* re-imagines a 1992 nine-month walk from New York to Nevada to protest the Nevada Nuclear Test Site.

### **The Foundry Theatre**

New York, NY

*The Oscar Grant Project (working title)*

Marcus Gardley

Melanie Joseph

*The Oscar Grant Project* investigates racial profiling through the story of the fatal police shooting of Oscar Grant in Oakland, CA.

### **The Sphinx Organization**

Detroit, MI

*A New Work by Tania Leon*

Tania Leon

Harlem Quartet

The Sphinx Organization will commission a new work from renowned Cuban composer Tania Leon for the Harlem Quartet, a Sphinx ensemble, to premiere during the 2010-2011 season.

### **UC San Diego Foundation**

La Jolla, CA

*Scarlet Stone*

Moshkin Ghalam

Tara Knight

Shahrokh Yadegari

*Scarlet Stone* is a multidisciplinary performance by artists of the Iranian diaspora, using the ancient mythology of the Persian culture to portray the current struggle of the people of Iran.

### **[MAP Fund 2010 Grantees](#)**